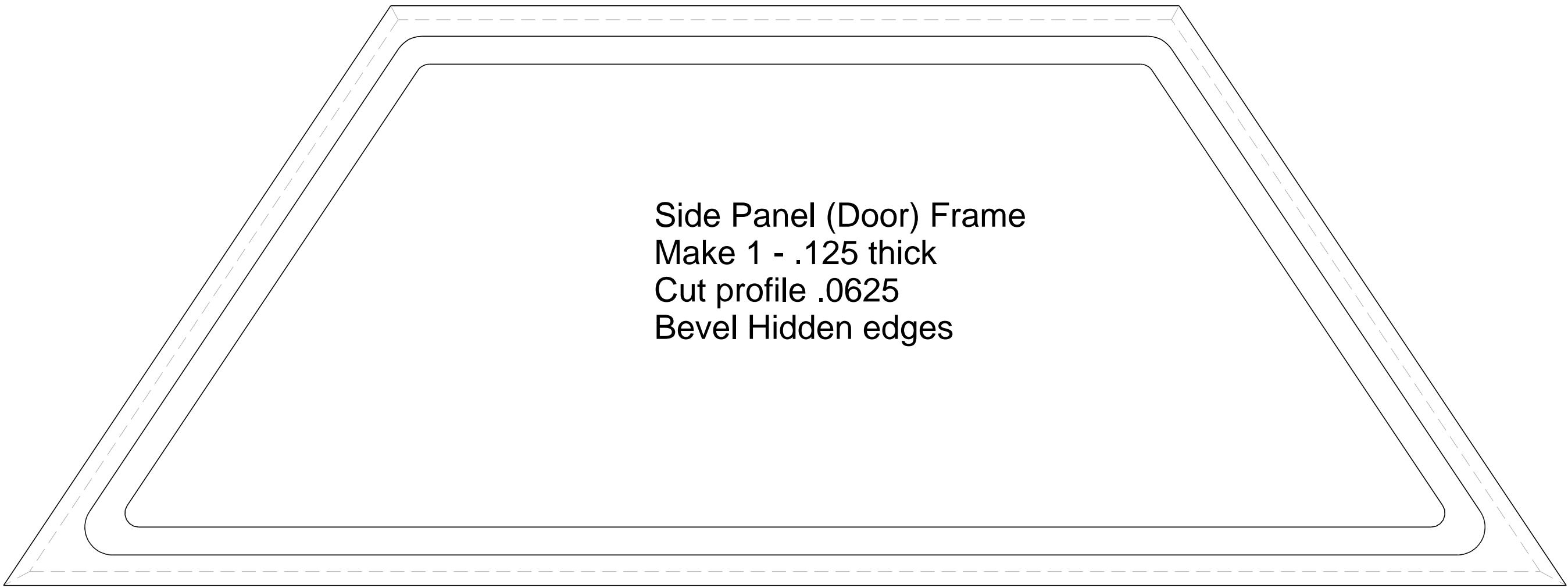
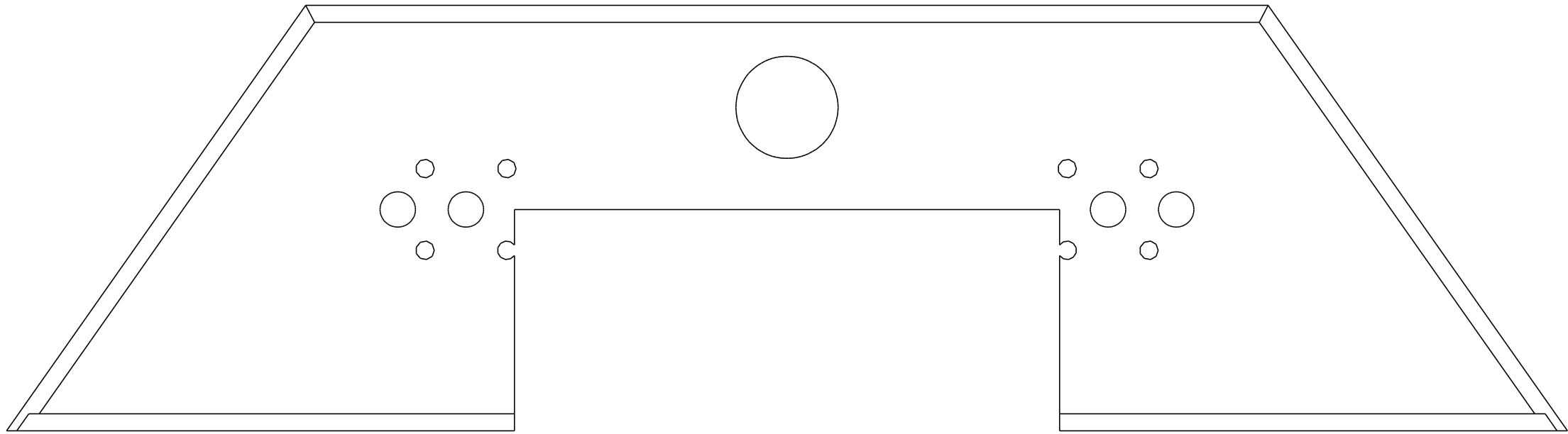


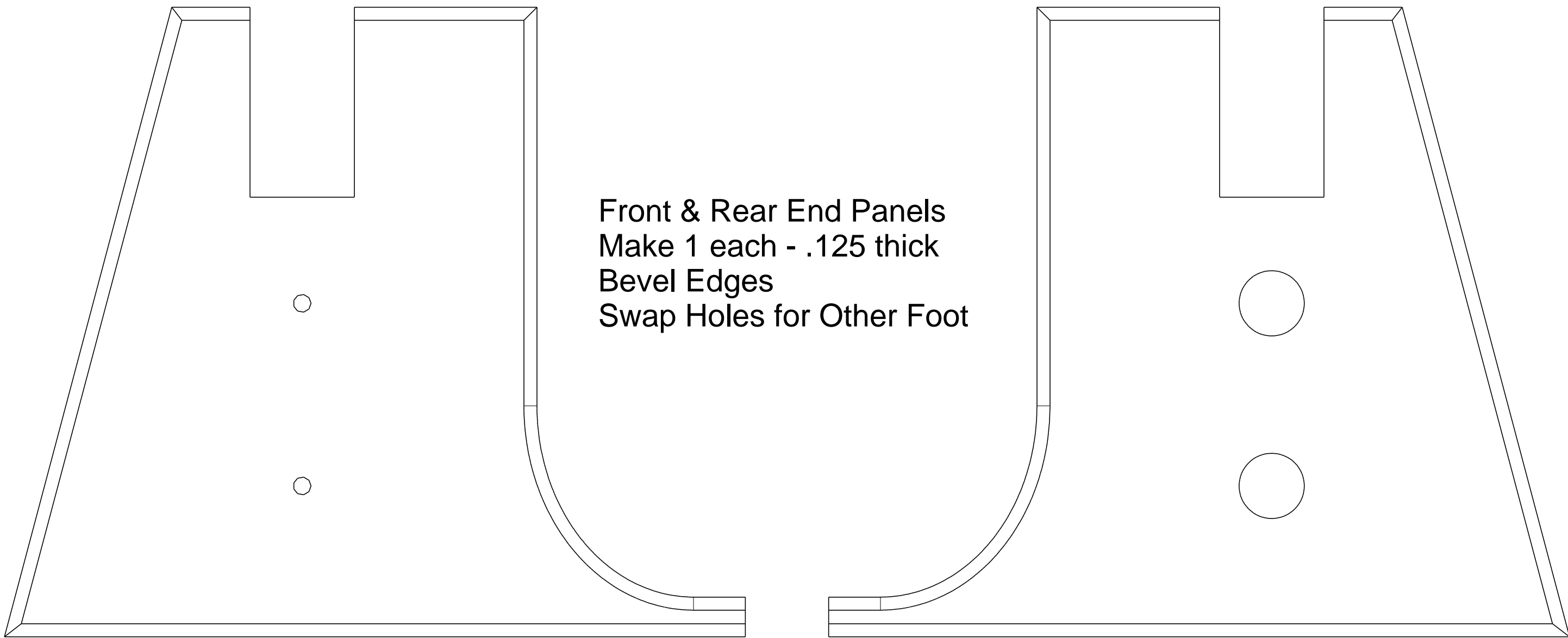
Side Panel Door
Make 1 - .125 thick
cut profile (edge and 2 large holes) .0625
other holes cut thru



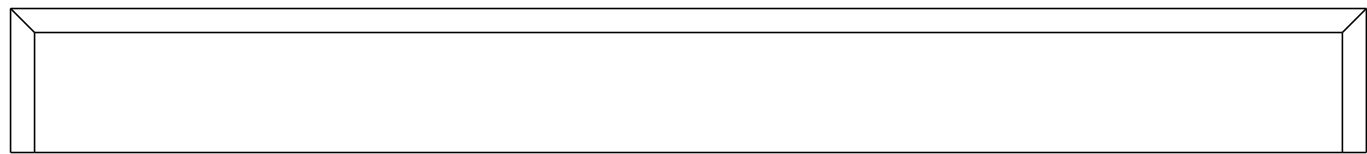
Side Panel (Door) Frame
Make 1 - .125 thick
Cut profile .0625
Bevel Hidden edges



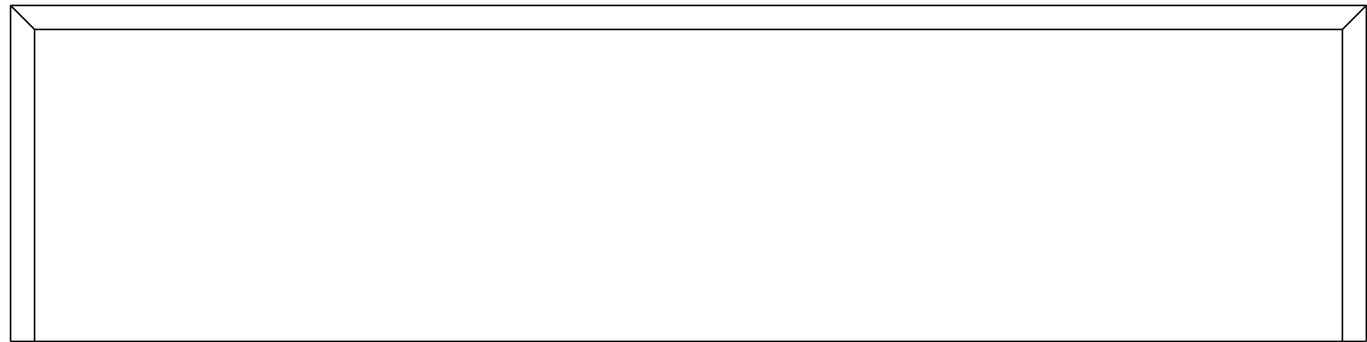
Straight Side Panel
Make 1 - .125 thick
Bevel Edges



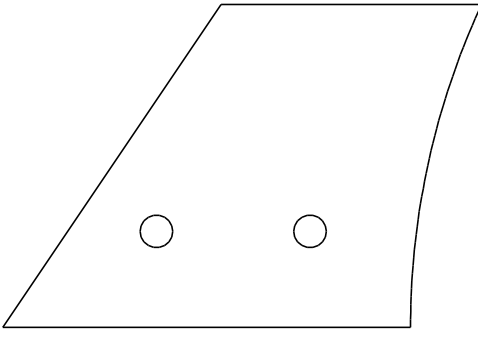
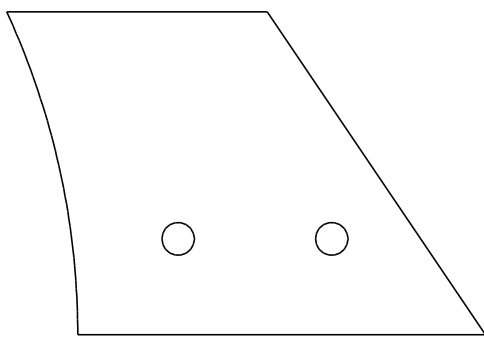
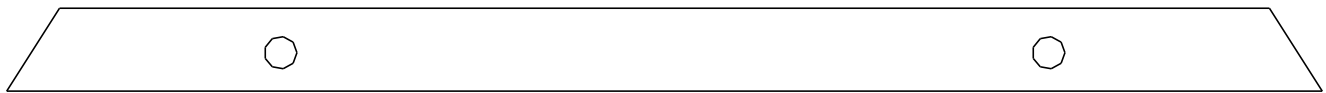
Front & Rear End Panels
Make 1 each - .125 thick
Bevel Edges
Swap Holes for Other Foot



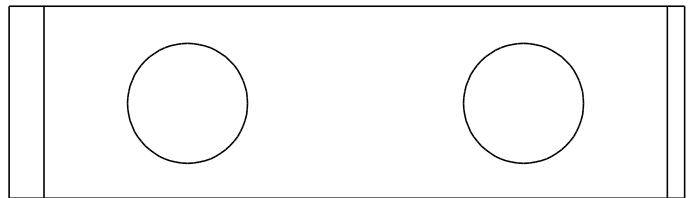
Top Narrow shell
Make 1 - .125 thick
bevel edges



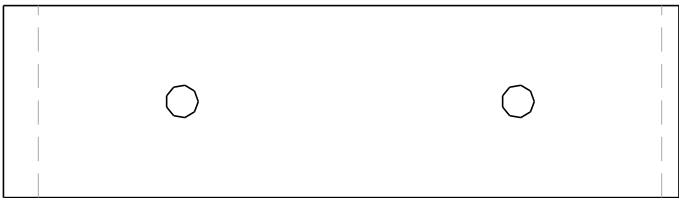
Top Wide Shell
Make 1 - .125 thick
bevel edges



Panel Trim
Top (above) Left & Right
make 1 each - .125 thick
holes - .0625 deep



Front Trim Strip
Make 1 - .125 thick
bevel edges



Rear Trim Strip
Make 1 - .125 thick
Cut profiles .0625
Bevel hidden edges

Outer Foot Shell - Page 1/2

Copyright Media-Conversions - Released for non-commercial use ONLY!

DRAWN	DATE	<div>MediaConversions</div>			
CHECKED					
QA					
MFG		SIZE C	FSCM NO.	DWG NO.	REV
APPROVED		SCALE		SHEET	