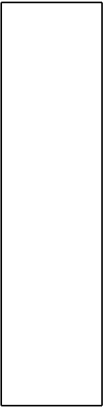
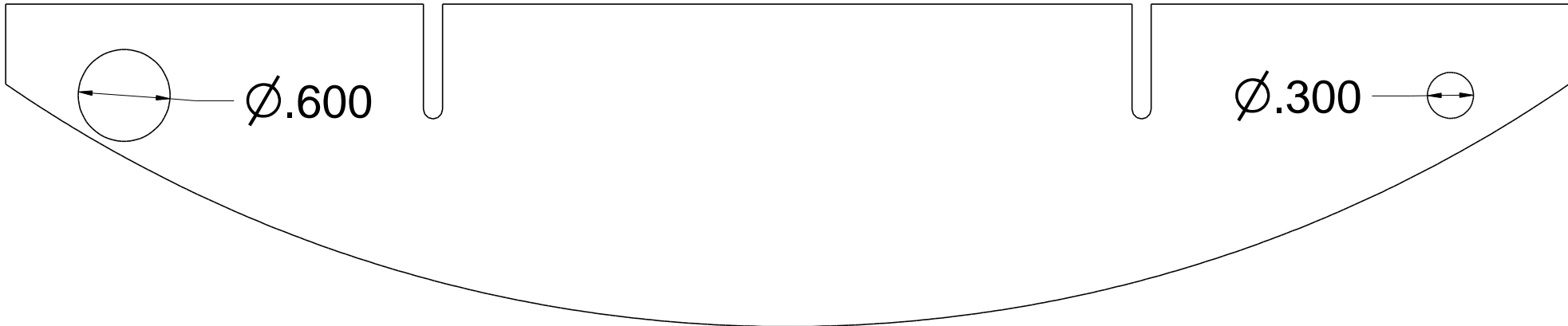


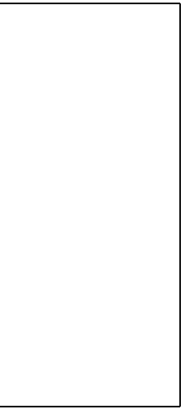
Inside Middle
make 1 - .125 thick



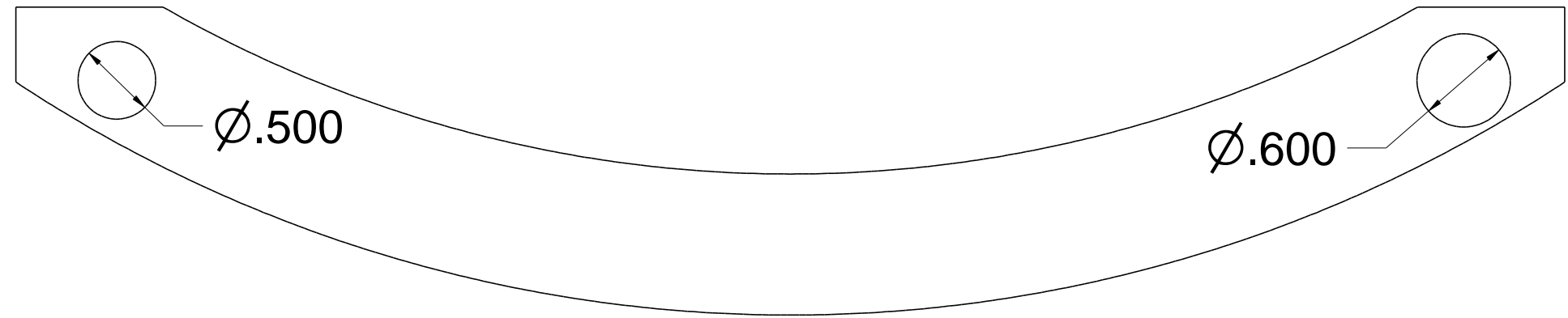
Box Side
make 4 - .125 thick



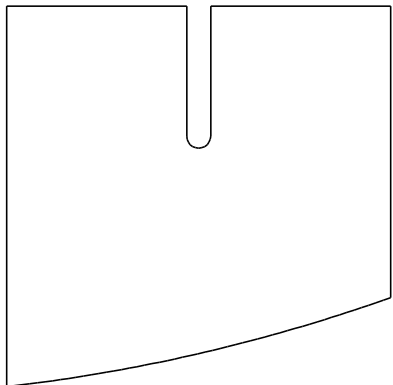
Outside Top/Bot
make 2 - .125 thick



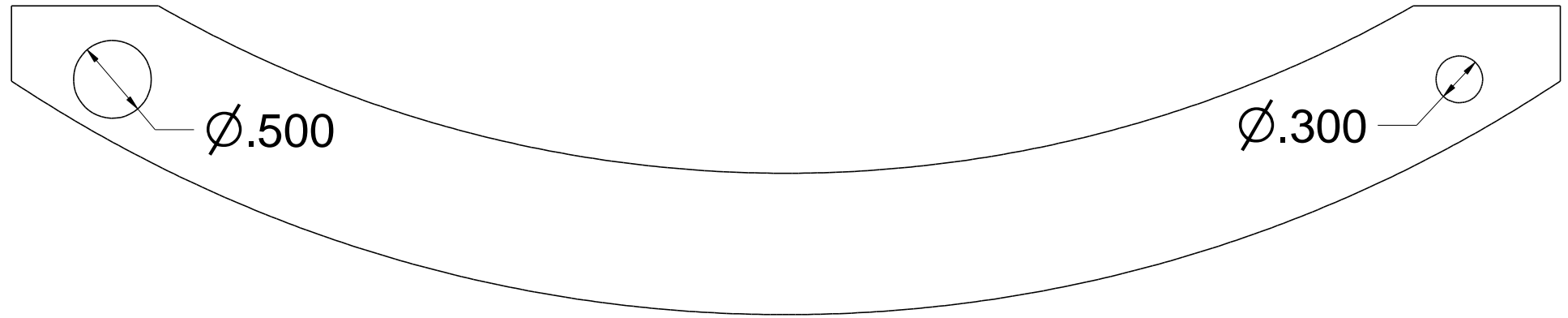
Box Rear
make 4 - .125 thick



Inner Middle
make 2 - .125 thick

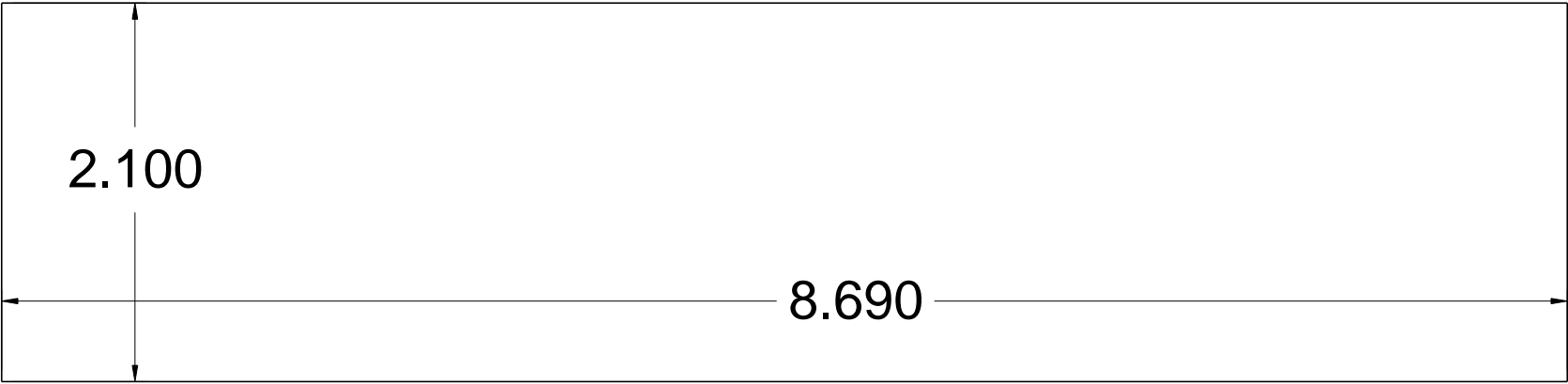


Box Spacer
Make 4 - .125 thick



Inner Top/Bot
make 2 - .125 thick

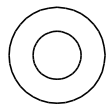
Not Shown:
Plastic Tube - used as shaft
.25 OD x .125 ID x 2.25 long - 2 pcs
Plastruct #90106 or equiv
Flanged Bearing - .25 ID x .5 OD
type fr188zz



Rear Cover
make 2 - .040 thick
drawn .25 longer to be trimmed to fit

Arm Box

Note: Cut slots in Rear Cover and Box Rear to match
Servo control arms used to extend Utility Arms



Bushing - Upper ~ .315 long
Lower ~ .534 long - make 2 pcs each

Copyright Media-Conversions - Released for non-commercial use ONLY!					
DRAWN	DATE	<div>MediaConversions</div>			
CHECKED	04222012				
QA					
MFG					
APPROVED		SIZE	FSCM NO.	DWG NO.	REV
		C		Arm Box for Eggcrate Frame	
		SCALE			SHEET